



Dolby® Cinema Server DCP-2000

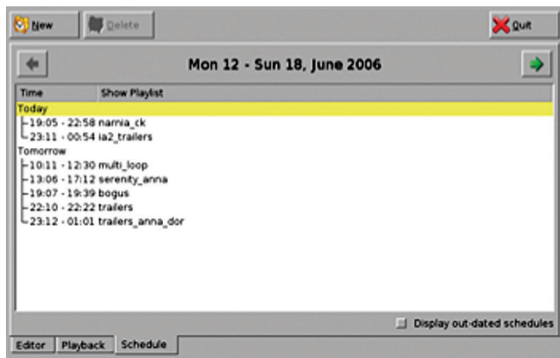
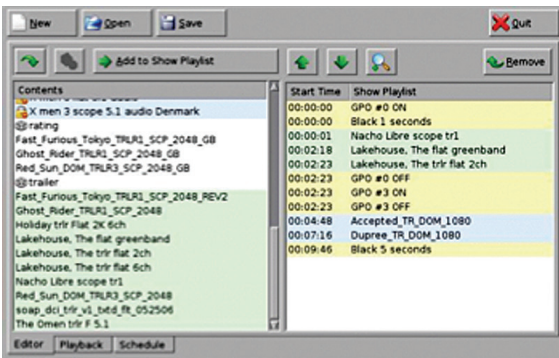


The Dolby® DCP-2000 cinema server provides superior reliability, image quality, and an unmatched feature set in the market.

The Dolby DCP-2000 supports playback of 2D and 3D DCI-compliant digital cinema packages (DCPs) as well as MPEG-2, MPEG-4, and H.264 files for movie, preshow, and alternative content. The Dolby DCP-2000 also includes standard DCI-required controls and features, remote playback, 2D and 3D server-generated subtitles, and accessibility support (Dolby Fidelio, Dolby CaptiView, and SMPTE ST 430-10 protocol). In addition, the Dolby DCP-2000 offers a simple 4K upgrade path as a future-proof solution.

DOLBY DCP-2000 KEY FEATURES

- Multiframe playback
- 2D and 3D playback
- Enhanced security
- Captioning device control
- Live MPEG-2 and H.264 playback via optional StreamIt license





Dolby Cinema Server DCP-2000

PLAYBACK

- JPEG 2000 2K or 4K movie and preshow file playback at 2K resolution—12-bit 4:4:4 (XYZ, RGB) on dual-link HD-SDI
- MPEG-2 MXF Interop movie, preshow, and alternative content file playback
- 3D—JPEG 2000 movies and 48p playback via dual 10-bit 4:2:2 (YPbPr/YCxCz)

SECURITY

- Texas Instruments CineLink™ II Strong Link Encryption
- DCI-compliant forensic watermarking (FIPS 140-2 Level 3 security certified)

INTERFACE

- Gigabit Ethernet for file transfer
- Gigabit Ethernet for control and subtitling
- RS-422 serial control port
- USB 2.0
- External control of captioning devices WGBH and PCS (optional)

STORAGE

- Up to 4 TB of RAID 5 storage

AUDIO

- AES/EBU audio digital, 16 channels
 - Single DB-25 connector
- Balanced or unbalanced analog audio, eight channels (two options available)
 - Single DB-25 connector internal board
 - External digital audio (DB-25) to analog audio converter in a 1-U rackmount chassis

GPIO

- Eight optically isolated inputs
- Eight open collector outputs

VIDEO OUTPUT

- Dual-link HD-SDI with physical link encryption

OUTPUT RESOLUTION

- Dual-link 2048 × 1080 24p 4:4:4 12 bit
- Two single-link 2048 × 1080 24p 4:2:2 10 bit

POWER

- Dual-redundant power supply
- 100–240 VAC; 50–60 Hz (2 × 300 W)

DIMENSIONS

- 3U rack unit
- 48 × 56 × 13 cm (19" × 22" × 5.25")

